

Case study Salzburg

In the *Land* (province) of Salzburg the region of the RVS (Regionalverband Salzburg Stadt- und Umgebungsgemeinden) was selected as case study area. The RVS is a regional association based on the provincial spatial planning law consisting of the city of Salzburg and 10 surrounding communes. This region covers an area of 267 km² whereas only 60 % (161 km²) of it is permanent settlement area. The number of inhabitants is about 200,000 with an increase of 10% between 1981 and 2000.

Land cover is diverse in this region: Industrial areas, commercial areas, settlement areas, agricultural areas, forests, intensive and extensive grassland, parks, playing grounds, urban green areas and domestic gardens are occurring. Different types of nature protected areas are existing, e.g. natural parks, nature protection areas, landscape conservation areas and natura 2000 areas.

In this region high rates of land consumption on medium to high quality agricultural soils due to urban and suburban development could be observed during the last decades. In future unspecific land use changes due to (sub)urban development can be expected. Possible sources of soil pollution are for example motorways and the airport. Contaminated sites also exist in the region. According to local needs no restriction for new commercial or industrial areas along such main transport infrastructures due to air pollution regulation is welcomed.

In order to secure a commonly agreed spatial development a regional development program has been developed and adopted as an ordinance based on the provincial spatial planning law of the *Land* of Salzburg (Spatial structural model see figure below). Based on improved collaboration among the communes regarding spatial planning regional problems and challenges will be solved together and measures can be set efficiently.

During the project the developed tools will be applied and their practicability will be tested within the RVS by using existing data. A lot of data like soil maps, soil data, land consumption mapping, land cover and land use data are available. Soil quality will be assessed in relation to past and future regional and local land planning as well as the Strategic Environmental Assessment (SEA). In particular building land already used or just dedicated by land use plans will be evaluated considering soil quality.

The results of the case study will help to steer regional land planning towards most suitable land for certain purposes and minimization of land consumption, in particular of valuable agricultural land.

Weblink to RVS: www.rvs.salzburg.at/regionalprogramm.htm

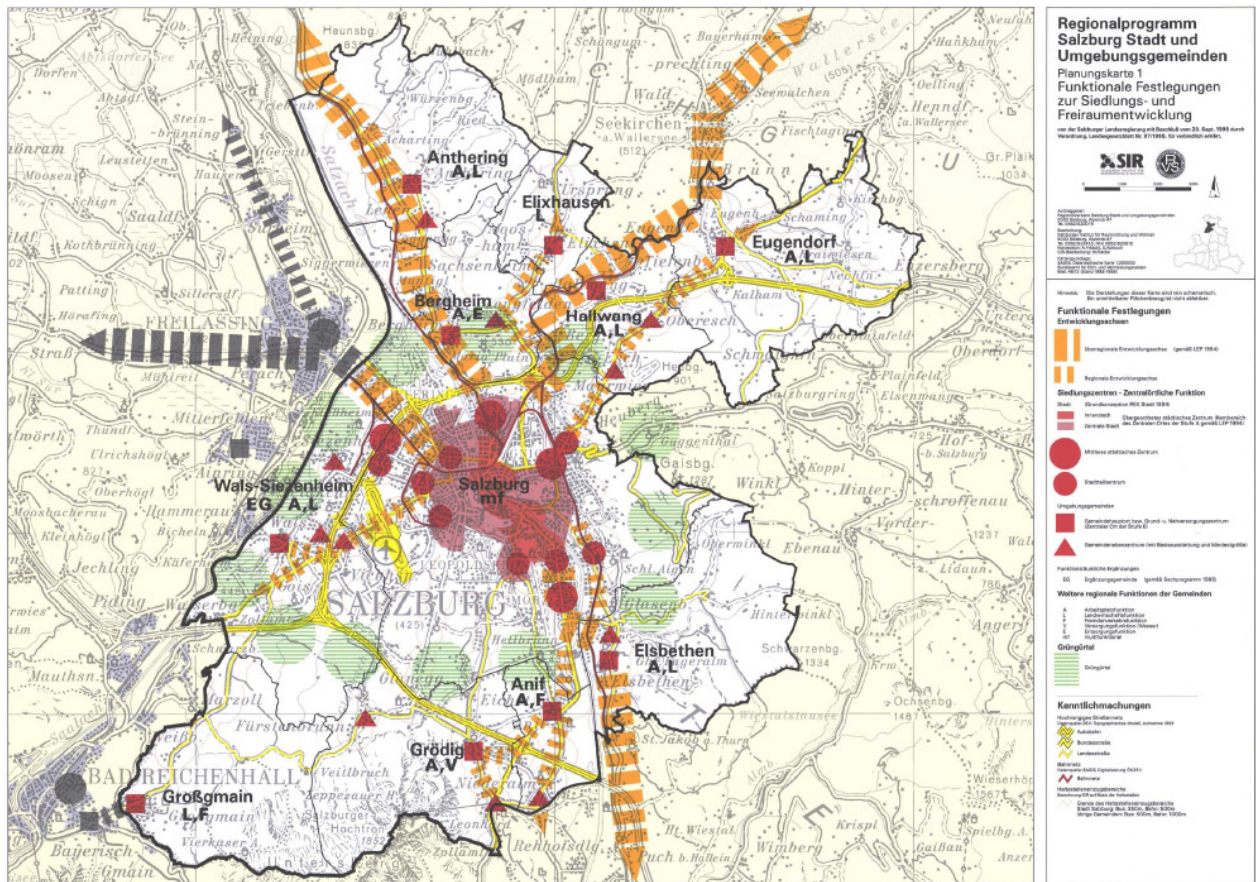


Figure: Spatial structural model of RVS – functional determination of development of settlement areas and open space (part of regional development program)

For further details please contact

Sigbert Huber
 Umweltbundesamt
 Spittelauer Lände 5
 A-1090 Wien
 Austria
 Tel.: +43-1-31304-3670
 Fax: +43-1-31304-3533
 Email: sigbert.huber@umweltbundesamt.at